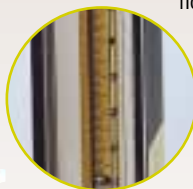




Riteflow® Flowmeters

Compatible with a Wide Range of Gases or Liquids for Lab or Plant Applications

Riteflow® Flowmeters are used for flow measurements in the lab, process flows in pilot plants, metering carrier gases in chromatography, indicating and controlling gases in manufacturing processes and for indicating flow rates in pumping or flow systems. Formed from heavy-walled, shock-resistant borosilicate glass, these flowmeters can be used at operating pressures up to 200 p.s.i.g. and maximum temperatures of 121°C (250°F). They feature fused ceramic scales that are accurate to within ±2% of full scale. Repeatability is 0.25%. Uniformly tapered bores have internal rib guides to stabilize the glass, stainless steel or carbonyl floats. Flow measurement is taken by reading the center of the float on the *universal scale*. The number on the scale corresponds to a flow rate for the given fluid or gas on a calibration chart that is supplied. Minimum 10:1 useful flow range with one float, better than 20:1 useful flow range can be obtained using two floats. Flowmeters are available in six sizes and three styles. Unmounted tubes have plain ends, guarded tubes in a plastic housing, and panel/bench mounted flowmeters are available with PTFE or aluminum valves.

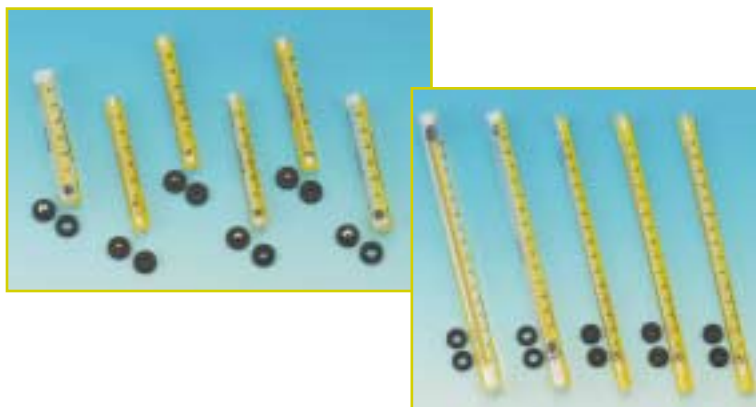


Universal Millimeter Scales

Millimeter scales indicate the height to which the float rises within the metering tube and are correlated with specific flow rates through the use of appropriate calibration data sheets or curves.

Scales of this type permit utilization of a given flowmeter for a great number of different fluids at diverse pressure and temperature conditions.

Flow Charts for a Variety of Fluids are Available from Bel-Art Products, Call Our Technical Service Department at 1-800 4BEL-ART



Riteflow® Guarded Flowtubes

Guarded tubes provide additional protection against breakage especially when used under high pressure. The flowtube is inserted into a plastic cylindrical guard which has two end bushings, 6.3mm (¼") NPT fittings and an O.D. of 25mm (1"). Maximum operating pressure 200 p.s.i.g. with a maximum operating temperature of 65.5°C (150°F).



Riteflow® Flowmeters with Plain Ends

Tubing is connected directly to the top and bottom of the tube. The flowtube can be held in place with a clamp. Maximum pressure is 200 p.s.i.g., maximum operating temperature is 121°C (250°F).

65mm scale, 80mm (3 1/8") overall length.

CATALOG NO.	SIZE	O.D. INLET/OUTLET	PRICE/EACH
H40400-0005	1	9.5mm / 9.5mm (3/8" / 3/8")	\$54.00
H40400-0010	2	9.5mm / 9.5mm (3/8" / 3/8")	54.00
H40400-0015	3	9.5mm / 9.5mm (3/8" / 3/8")	54.00
H40400-0020	4	9.5mm / 9.5mm (3/8" / 3/8")	54.00
H40400-0025	5	12.3mm / 11.9mm (1/2" / 1/2")	57.60
H40400-0030	6	14.2mm / 12.7mm (1/2" / 1/2")	63.90

150mm scale, 190mm (7 1/2") overall length.

CATALOG NO.	SIZE	O.D. INLET/OUTLET	PRICE/EACH
H40401-0035	1	9.5mm / 9.5mm (3/8" / 3/8")	\$86.55
H40401-0075	2	9.5mm / 9.5mm (3/8" / 3/8")	86.55
H40401-0125	3	9.5mm / 9.5mm (3/8" / 3/8")	86.55
H40401-0215	4	12.7mm / 12.7mm (1/2" / 1/2")	90.00
H40401-0305	5	12.7mm / 14.2mm (1/2" / 1/2")	120.00

65mm scale, 152mm (6") overall length.

CATALOG NO.	SIZE	PRICE/EACH
H40402-0005	1	\$136.89
H40402-0010	2	136.20
H40402-0015	3	136.20
H40402-0020	4	136.20
H40402-0025	5	139.59
H40402-0030	6	148.35

150mm scale, 263mm (10 3/8") overall length.

CATALOG NO.	SIZE	PRICE/EACH
H40403-0055	1	\$179.85
H40403-0095	2	176.49
H40403-0145	3	176.49
H40403-0235	4	179.85
H40403-0325	5	208.50

For Teflon® Tubing, See Page 163

Refer to Flow Rate Charts for Selection, On Page 47